

DEPARTMENT OF THE ARMY TECHNICAL MANUAL

**DIRECT SUPPORT AND GENERAL SUPPORT MAINTENANCE
REPAIR PARTS AND SPECIAL TOOLS LISTS (INCLUDING
DEPOT MAINTENANCE REPAIR PARTS AND SPECIAL TOOLS)
CHANNEL ALIGNMENT INDICATORS
ID-292/PRC-6 AND ID-292A/PRC-6
FSN 6625-355-7826**

**Headquarters, Department of the Army, Washington, D.C.
2 April 1973**

Current as of October 1972

	Paragraph	Page
SECTION I. INTRODUCTION		
SCOPE	1-1	2
G e n e r a l	1-2	2
Explanation of columns	1-3	2
Special Information	1-4	4
Location of repair parts	1-6	4
Abbreviations (Not applicable)	1-6	4
Reporting of equipment publication improvements	1-7	4
II. REPAIR PARTS LIST		6
III. SPECIAL TOOLS, TEST AND SUPPORT EQUIPMENT (Not Applicable)		
IV. INDEX-FEDERAL STOCK NUMBER AND REFERENCE NUMBER CROSS- REFERENCE TO FIGURE AND ITEM NUMBER		9

*This manual supersedes TM 11-6625-332-35P, 5 December 1961.

SECTION I.
INTRODUCTION

1-1. Scope

This manual lists repair parts and special tools required for the performance of direct support, general support, and depot maintenance of the ID-292/PRC-6 and ID-292A/PRC-6. The PCCN for the ID-292/PRC-6 and ID-292A/PRC-6 is GCWABR for all models.

1-2. General

This repair parts and special tools list is divided into the following sections:

a. Repair Parts List—Section II. A list of repair parts authorized for the performance of maintenance at the direct support, general support and depot level. This repair parts list is arranged in alphabetical order.

b. Special Tools, Test and Support Equipment—Section III. Not applicable.

c. Index—Federal Stock Number and Reference Number Cross-Reference to Figure and Item Number—Section IV. A list, in ascending numerical sequence, of all Federal stock numbers appearing in the listings, followed by a list, in alphabetic sequence, of all reference numbers appearing in the listings. Federal stock number and reference numbers are cross-referenced to each illustration figure and item number or reference designation appearance.

1-3. Explanation of Columns

The following provides an explanation of columns found in the tabular list.

a. Source, Maintenance, and Recoverability Codes (SMR).

(1) *Source code.* Indicates the source for the listed items. Source codes are—

Code	Explanation
------	-------------

P—	Repair parts, special tools and test equipment supplied from the GSA/DSA or
----	---

Army supply system and authorized for use at indicated maintenance categories.

P2—Repair parts, special tools and test equipment which are procured and stocked for insurance purposes because the combat or military essentiality of the end item dictates that a minimum quantity be available in the supply system.

P9—Assigned to items which are NSA design controlled: unique repair parts, special tools, test, measuring, and diagnostic equipment which are stocked and supplied by the Army COMSEC Logistic System and which are not subject to the provisions of AR 880-41.

P10—Assigned to items which are NSA design controlled: special tools, test, measuring, and diagnostic equipment for COMSEC support which are accountable under the provisions of AR 880-41 and which are stocked and supplied by the Army COMSEC Logistic System.

M—Repair parts, special tools and test equipment which are not procured or stocked as such in the supply system but are to be manufactured at indicated maintenance levels.

A—Assemblies which are not procured or stocked as such but are made up of two or more units. Such component units carry individual stock numbers and descriptions, are procured and stocked separately, and can be assembled to form the required assembly at indicated maintenance categories.

X—Parts and assemblies that are not procured or stocked because the failure rate is normally below that of the applicable end item or component. The failure of such part or assembly should result in retirement of the end item from the supply system.

<i>Code</i>	<i>Explanation</i>
X1	Repair parts which are not procured or stocked. The requirement for such items will be filled by the next higher assembly or component.
X2	Repair parts, special tools and test equipment which are not stocked and have no foreseen mortality. The indicated maintenance category requiring such repair parts will attempt to obtain the parts through cannibalization or salvage. The item may be requisitioned, with exception data, from the end item manager for immediate use.
G	Major assemblies that are procured with PEMA funds for initial issue only as exchange assemblies at DS and GS level. These assemblies will not be stocked above DS and GS level or returned to depot supply level.

NOTE

Cannibalization or salvage may be used as a source of supply for any items source coded above except for those coded X1 and aircraft support items as restricted by AR 700-42.

(2) *Maintenance code.* Indicates the lowest category of maintenance authorized to install the listed item. Capabilities of higher maintenance categories are considered equal or better. Maintenance codes are—

<i>Code</i>	<i>Explanation</i>
C	Crew/operator
O	Organizational maintenance
F	Direct support maintenance
H	General support maintenance
D	Depot maintenance

(3) *Recoverability code.* Indicates whether unserviceable items should be returned for recovery or salvage. Items not coded are nonrecoverable. Recoverability codes are—

<i>Code</i>	<i>Explanation</i>
R	Repair parts (assemblies and components), special tools and test equipment which are considered economically reparable at direct and general support maintenance levels. When the item is no longer economically reparable, it is normally disposed of at the GS level. When supply considerations dictate, some of these repair parts may be listed for automatic return to supply for depot level repair as set forth in AR 710-1. When so listed, they will be replaced by supply on an exchange basis.

<i>Code</i>	<i>Explanation</i>
S	Repair parts, special tools and test equipment, and assemblies which are economically reparable at DS and GS activities and which normally are furnished by supply on an exchange basis. When items are determined by a GSU to be uneconomically reparable, they will be evacuated to a depot for evaluation and analysis before final disposition.
T	High dollar value recoverable repair parts, special tools and test equipment which are subject to special handling and are issued on an exchange basis. Such items will be repaired or overhauled at depot maintenance activities only. No repair may be accomplished at lower levels.
U	Repair parts, special tools and test equipment specifically selected for salvage by reclamation units because of precious metal content, critical materials, high dollar value, or reusable casings or castings.

b. Federal Stock Number. Indicates the Federal stock number assigned to the item and will be used for requisitioning purposes.

c. Description. Indicates the Federal item name and a minimum description required to identify the item. The last line indicates the reference number followed by the applicable Federal Supply Code for Manufacturer (FSCM) in parentheses. The FSCM is used as an element in item identification to designate manufacturer or distributor or Government agency, etc., and is identified in SB 708-42.

d. Unit of Measure (U/M). Indicates the standard or basic quantity by which the listed item is used in performing the actual maintenance function. This measure is expressed by a two-character alphabetical abbreviation; e.g., ea, in, pr, etc., and is the basis used to indicate quantities and allowances in subsequent columns. When the unit of measure differs from the unit of issue, the lowest unit of issue that will satisfy the required units of measure will be requisitioned.

e. Quantity Incorporated in Unit. This column indicates the quantity of the item used in the equipment. Subsequent appearances of the same item in the same assembly are indicated by the letters "REF".

f. 30-Day DS/GS Maintenance Allowances.

NOTE

Allowances in GS column are for GS maintenance only.

(1) The repair parts indicated by entries in separate allowance columns for DS and GS represent those authorized for use at that category of maintenance to be requisitioned on an "as required" basis, until stockage is based on demand in accordance with AR 710-2.

(2) Allowance quantities are indicated in the special tool lists section for special tools, TIDE, and other support equipment.

g. 1-Year Allowances Per 100 Equipments/Contingency Planning Purposes. Column intentionally left blank.

b. Depot Maintenance Allowance Per 100 Equipment. This column indicates opposite the first appearance of each item the total quantity authorized for depot maintenance of 100 equipments.

i. Illustration. This column is divided as follows:

(1) *Figure number.* Indicates the figure number of the illustration on which the item is shown, in TM 11-6069.

(2) *Item NW&W.* Indicates the item number or reference designation used to reference the item in the illustration.

1-4. Special Information

a. Usable on codes are included in column 3. Uncoded items are applicable to all models. Identification of the usable on codes used in this publication are—

<i>Code</i>	<i>Used on</i>
AT6	ID-292/PRC-6
A07	ID-292A/PRC-6

b. The following publications pertain to ID-292/PRC-6 and ID-292A/PRC-6 and its components:

TM 11-5059	Channel Alignment Indicators ID-292/PRC-6 and ID-292A/PRC-6.
TM 11-6625-332-20P	Organizational Maintenance Repair Parts and Special Tools Lists: Channel Alignment Indicators ID-292/PRC-6 and ID-292A/PRC-6.

1-5. Location of Repair Parts

a. This manual contains one cross-reference index (sec IV) to be used to locate a repair part when either the Federal stock number or reference number (manufacturer's part number) is known. The first column in the index is prepared in numerical or alphanumeric sequence in ascending order. The reference numbers (manufacturer's part numbers) are listed immediately following the last listed Federal stock number in the index of Federal stock numbers.

b. When the Federal stock number or reference number is known, follow the procedures given in (1) and (2) below.

(1) Refer to the index of Federal stock numbers (sec IV) and locate the Federal stock number or reference number. The FSN and reference number are cross-referenced to the applicable figure and item number or reference designation.

(2) Refer to the repair parts list (sec II) and locate the figure number (col 10a) and item number or reference designation (col 10b) as noted in the FSN index.

c. When the figure and item number or reference designation are known, scrutinize columns 10a and 10b of the repair parts list (sec II) until the item is located.

d. When the FSN, reference number, figure number, item number and reference designation are not known, scrutinize column 3 of the repair parts list (sec II), which is arranged in alphabetical order.

1-6. Abbreviations

Not applicable.

1-7. Reporting of Equipment Publication Improvements

The reporting of errors, omissions, and recommendations for improving this publication by the individual user is encouraged. Reports should be submitted on DA Form 2028 (Recommended Changer to Publications) and forwarded direct to Commander, US Army Electronics Command, ATTN: AMSEL-MA-CW, Fort Monmouth, N.J. 07703.

[Next page is 6].

SECTION II

TM 11-6625-332-34P

(1) SMR CODE	(2) FEDERAL STOCK NUMBER	(3) DESCRIPTION REFERENCE NUMBER & MFR. CODE USABLE ON CODE	(4) UNIT OF MEAS	(5) QTY INC IN UNIT	(6) 30-DAY GS MAINT ALLOWANCE			(7) 30-DAY GS MAINT ALLOWANCE			(8) 1-YR ALW PER 100 EQUIP CATG/CY	(9) DEPOT MAINT ALW PER 100 EQUIP	(10) ILLUSTRATION	
					(a)	(b)	(c)	(a)	(b)	(c)			(a)	(b)
					1-20	21-50	51-100	1-20	21-50	51-100			FIGURE NO.	ITEM NO.
P--H--	5995-351-9065	CABLE ASSEMBLY, SPECIAL PURPOSE, ELECTRICAL 211A33J1 (RAYTHEON NO. VSP SMB284487 (80063)	EA	1				*	*	*		9	11	W2
P--H--	5910-230-9065	CAPACITOR, FIXED, CERAMIC DIELECTRIC C1. 15000UF P100PCT 150V	EA	1				*	*	*		3	6	C1
P--H--	5910-280-5932	SSM019-8 (84335) ATG CAPACITOR, FIXED, CERAMIC DIELECTRIC C1. 300000UF P100PCT 150 VDC	EA	1				*	*	*		3	6.1	C1
P--H--	5935-644-9094	SMB284488 (80063) A07 CONNECTOR, PLUG, ELECTRICAL P1.....	EA	1				*	*	*		3	8.1	P1
P--C--	5960-230-5262	SMB284478 (80063) ELECTRON TUBE V1.....	EA	1	*	*	*	*	*	*	100	8		V1
P--F--	5340-856-4757	JAN5678 (81350) FASTENER, LATCH SEY H3 (EXCELSIOR..... HARDWARE NO. USP211A41)	EA	1	*	*	*	*	*	*		3		H3
P--D--	6625-306-2087	SMB284485 (80063) GASKET 02.....	EA	1	*	*	*	*	*	*		5		02
P--H--	5325-276-4248	SMB284458 (80063) GROMMET 06.....	EA	1				*	*	*		4		06
P--H--	6625-265-3373	SMB284476 (80063) INSULATION SLEEVE, ELECTRICAL E3.....	EA	1				*	*	*		3		E3
P--D--	5355-667-9206	SMB284477 (80063) KNOB 05.....	EA	1	*	*	*	*	*	*		3		05
P--H--	6625-649-2700	SMB284474 (80063) METER, ARBITRARY SCALE M1.....	EA	1				*	*	*		3	11	M1
P--H--	5905-683-2278	SMB28478 (80063) RESISTOR, FIXED, COMPOSITION R7 10000.. OHM PORMSPCT 1/4W (NOTE IN SOME EQUIPTS OF PLAIN MODELS R7 IS 15K)	EA	1				*	*	*		3	6	R7
P--H--	5905-102-2834	RC10BF103J (81349) ATG RESISTOR, FIXED, COMPOSITION R7 15000.. OHM PORM10PCT 1/4W (NOTE FOR SOME PLAIN MODELS)	EA	1				*	*	*		3	6	R7
P--H--	5905-716-5456	RC10BF133K (81349) ATG RESISTOR, FIXED, COMPOSITION R7 12000.. OHM PORMSPCT 1/4W	EA	1				*	*	*		3	6.1	R7
P--H--	5905-201-6752	RC09GF123J (81349) A07 RESISTOR, FIXED, COMPOSITION R10 18000.. OHM PORMSPCT 1/4W	EA	1				*	*	*		3	6	R10
P--H--	5905-687-0002	RC09GF183J (81349) ATG RESISTOR, FIXED, COMPOSITION R6 22000.. PORM10PCT 1/4W	EA	2				*	*	*		3	6.1	R6
P--H--	5905-687-0002	RC09GF223K (81349) ATG RESISTOR, FIXED, COMPOSITION R10 22000.. PORM10PCT 1/4W	EA	REF				*	*	*			6.1	R10
P--H--	5905-201-6739	RC09GF223K (81349) ATG RESISTOR, FIXED, COMPOSITION R2 30000.. OHM PORMSPCT 1/4W	EA	1				*	*	*		3	11	R2
P--H--	5905-681-8856	RC09GF303J (81349) RESISTOR, FIXED, COMPOSITION R1 51000.. OHM PORMSPCT 1/4W RC09GF514J (81349)	EA	1				*	*	*		3	11	R1

SECTION II

TM 11-6625-332-34P

(1) SMR CODE	(2) FEDERAL STOCK NUMBER	(3) DESCRIPTION REFERENCE NUMBER & MFR. CODE USABLE ON CODE	(4) UNIT OF MEAS	(5) QTY INC IN UNIT	(6) 30-DAY DS MAINT ALLOWANCE			(7) 30-DAY SS MAINT ALLOWANCE			(8) 1-YR ALT PER 100 EQUIP CYCCT	(9) DEPOT MAINT ALT PER 100 EQUIP	(10) ILLUSTRATION		
					(a)	(b)	(c)	(a)	(b)	(c)			(a)	(b)	
					1-20	21-50	51-100	1-20	21-50	51-100			FIGURE NO.	ITEM NO.	
P--H--	5905-681-8817	RESISTOR, FIXED, COMPOSITION FORMSPCT 1/4W RC09GF109K (81349)	R9 1 MEG..	EA	2				*	*	*		3	11	R9
P--H--	5905-681-8817	RESISTOR, FIXED, COMPOSITION FORMSPCT 1/4W RC09GF109K (81349)	R17 1MEG...	EA	REF				*	*	*			11	R17
P--H--	5905-201-6747	RESISTOR, FIXED, COMPOSITION FORMSPCT 1/4W RC09GF109K (81349)	R10 1.2MEG.	EA	1				*	*	*		3	11.1	R10
P--H--	5905-279-4580	RESISTOR, FIXED, COMPOSITION FORMSPCT 1/4W RC09GF129K (81349)	R8 2MEG... A07	EA	1				*	*	*		3	8	R8
P--H--	5905-284-3534	RESISTOR, FIXED, COMPOSITION FORMSPCT 1/4W RC09GF205J (81349)	R15 7.5MEG.	EA	1				*	*	*		3	11	R15
P--H--	5905-688-4240	RESISTOR, FIXED, WIREWOUND FORMSPCT 2W SMB284472-2 (80063)	R14 1.0 OHM.. A07	EA	1				*	*	*		3	11	R14
P--H--	5905-566-3790	RESISTOR, FIXED, WIREWOUND FORMSPCT 2W SMB284472-2 (80063)	R14 1.6 OHM.. A07	EA	1				*	*	*		3	8.1	R14
P--H--	5905-978-7702	RESISTOR, FIXED, WIREWOUND FORMSPCT 1/2W SMB284472-5 (80063)	R11 2 OHM.... A07	EA	1				*	*	*		3	11	R11
P--H--	5905-752-3496	RESISTOR, FIXED, WIREWOUND FORMSPCT 1/3W R1382R0J (81350)	R11 2 OHM.... A07	EA	1				*	*	*		3	8.1	R11
P--H--	5905-545-8102	RESISTOR, FIXED, WIREWOUND FORMSPCT 2W SMB284472-3 (80063) 2.7 OHM FORMSPCT 2W (NOTE THIS RESISTOR WILLBE APPLIED TO ALL ID-292/PRC-6 PROCURED ON ORDER M3129-P-51 PER MWO 11-5059-1)	NO-REF-DESIG... 2.7 OHM FORMSPCT 2W	EA	1				*	*	*		3		
P--H--	5905-257-6450	RESISTOR, FIXED, WIREWOUND FORMSPCT 1/3W SMB284472-4 (80063)	R13 3125 OHM. A07	EA	1				*	*	*		3	8	R13
P--H--	5905-279-5278	RESISTOR, FIXED, WIREWOUND FORMSPCT 1/3W SMB284472-4 (80063)	R12 199805... A07	EA	1				*	*	*		3	8	R12
P--H--	5905-688-4235	RESISTOR, VARIABLE, COMPOSITION FORMSPCT 2W 10000 OHM FORMSPCT 2W USP211A14 (49956)	R9..... A07	EA	1				*	*	*		3	6	R9
P--H--	5905-279-9505	RESISTOR, VARIABLE, COMPOSITION FORMSPCT W 50000 OHM FORMSPCT W 48M (12697)	R9..... A07	EA	1				*	*	*		3	8.1	R9
P--H--	5960-537-4214	RETAINER, ELECTRON TUBE SC825549 (80063)	O6.....	EA	1				*	*	*		3		O6
P--O--	5120-236-2140	SCREWDRIVER 1017 (13082)	H2.....	EA	1	*	*	*	*	*	*		3		H2
P--H--	5935-5783496	SHELL ELECTRICAL CONNECTOR SMB284463 (80063)	A7.....	EA	1				*	*	*		3		A7
P--H--	5935-491-8424	SOCKET, ELECTRON TUBE 11953 (71785)	X1.....	EA	1				*	*	*		3		X1

SECTION II

TM 11-6625-332-34P

(1) SMP CODE	(2) FEDERAL STOCK NUMBER	(3) DESCRIPTION REFERENCE NUMBER & MFR. CODE USABLE ON CODE		(4) UNIT OF MEAS	(5) QTY INC IN UNIT	(6) 30-DAY GS MAINT ALLOWANCE			(7) 20-DAY GS MAINT ALLOWANCE			(8) 1-YR ALW PER 100 EQUIP CNTGCT	(9) SPOT MAINT ALW PER 100 EQUIP	(10) ILLUSTRATION	
						(a)	(b)	(c)	(a)	(b)	(c)			(a)	(b)
						1-20	21-30	31-100	1-20	21-30	31-100			FIGURE NO.	ITEM NO.
P--H--	5930-513-3079	SWITCH, ROTARY IND 28493 (80068)		EA	1				*	*	*		5	8	81

SECTION IV

TM 11-6625-332-34P

INDEX - FEDERAL STOCK NUMBER AND REFERENCE NUMBER
CROSS-REFERENCE TO FIGURE AND ITEM NUMBER

STOCK NUMBER	FIGURE NO.	ITEM NO.	STOCK NUMBER	FIGURE NO.	ITEM NO.
5120-236-2140		M2	5905-687-0002	6.1	R6
5325-276-4248		M6	5905-687-0005	6.1	R10
5340-356-4757		M3	5905-688-6235	6	R9
5355-667-9206		M5	5905-688-6240	11	R14
5905-102-2834	6	R7	5905-716-5456	6.1	R7
5905201-6739	11	R2	5905-752-3496	8.1	R11
5905-201-6747	11.1	R18	5905-978-7702	11	R11
5905-201-6752	6	R10	5910-238-9865	6	C1
5905-257-6450	8	R13	5910-280-5932	6.1	C1
5905-279-4380	8	R8	5930-513-3079	8	
5905-279-5278	8	R12	5935-491-8424		X1
5905-284-3534	11	R15	5935-578-3496		A7
5905-545-0102			5935-644-9094	8.1	P1
5905-549-9509	8.1	R9	5960-230-5262	8	V1
5905-566-3798	8.1	R14	5960-337-4214		O6
5905-681-8818	11	R3	5995-351-5845	11	M2
5905-681-8017	11	R17	6625-265-3373		E3
5905-681-0056	11	R1	6625-306-2087		O2
5905-683-2238	6	R7	662-649-2700	11	M1

REFERENCE NO.	MFR CODE	FIG. NO.	REFERENCE NO.	MFR CODE	FIG. NO.	ITEM NO.
A	14796		SM284470	80063	8.1	R1
JAN5678	81350	8	SMB284472-1	80063	8	R12
RC09GF105K	81349	11	SMB284472-3	80063	8.1	R11
RC09GF105K	81349	11	SMB284472-4	80063	8	R13
RC09GF125K	81349	6.1	SMB284472-5	80063	8.1	R14
RC09GF125K	81349	11.1	SMB284474	80063		O5
RC09GF125K	81349	6	SMB284476	80063		O6
RC09GF205J	81349	8	SMB284477	80063		E3
RC09GF223K	81349	6.1	SMB284485	80063		M3
RC09GF223K	81349	6.1	SMB284480	80063	6.1	C1
RC09GF303J	81349	11	SMB28453	80063	8	
RC09GF514J	81349	11	SMB28478	80063	11	M1
RC09GF755J	81349	11	SMB384472-2	80063	11	R14
RC10GF103J	81349	6	SMB284487	80063	11	M2
RC10GF153K	81349	6	SM015-8	84335	6	C1
RU382ROJ	81350	11	USP211A14	49936	6	R9
SC825549	80063		1017	13082		M2
SM8284458	80063		11953	71785		J
SM8284463	80063		48M	12697	8.1	R9

By Order of the Secretary of the Army:

Official:

VERNE L. BOWERS
Major General, United States Army
The Adjutant General

CREIGHTON W. ABRAMS
General, United States Army
Chief of Staff

Distribution:

To be distributed in accordance with DA Form 12-51 (qty rqr block No. 448) Direct and General Support Maintenance requirements for AN/TBC-75.

END

7-25-83

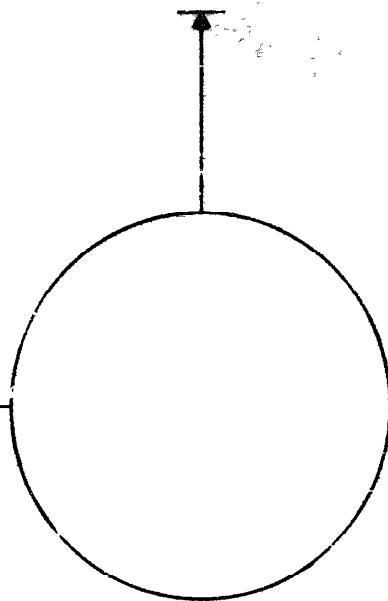
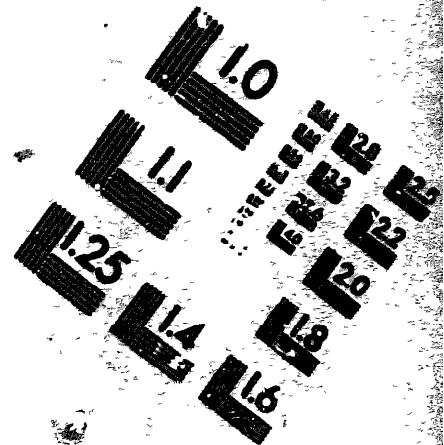
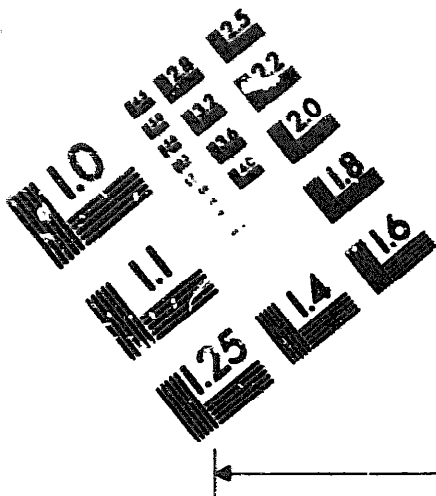
DATE





DEPARTMENT OF THE ARMY

MICROFORM
TEST TARGET



150 MM

1.0 mm (e= .31 mm)

ABCDEFGHIJKLMN OPQRSTUVWXYZ 1234567890
abcdefghijklmnopqrstuvwxyz \$%&'()*+,-./:;=<=>@*

1.5 mm (e= 1.09 mm)

ABCDEFGHIJKLMN OPQRSTUVWXYZ 1234567890
abcdefghijklmnopqrstuvwxyz \$%&'()*+,-./:;=<=>@*

2.0 mm (e= 1.37 mm)

ABCDEFGHIJKLMN OPQRSTUVWXYZ
abcdefghijklmnopqrstuvwxyz
1234567890 \$%&'()*+,-./:;=<=>@*

2.5 mm (e= 1.77 mm)

ABCDEFGHIJKLMN OPQRSTUVWXYZ
abcdefghijklmnopqrstuvwxyz
1234567890 \$%&'()*+,-./:;=<=>@*

1.0 mm (e= .31 mm)

ABCDEFGHIJKLMN OPQRSTUVWXYZ 1234567890
abcdefghijklmnopqrstuvwxyz \$%&'()*+,-./:;=<=>@*

1.5 mm (e= 1.09 mm)

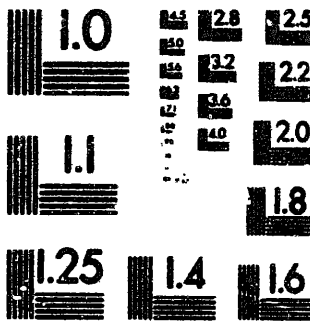
ABCDEFGHIJKLMN OPQRSTUVWXYZ 1234567890
abcdefghijklmnopqrstuvwxyz \$%&'()*+,-./:;=<=>@*

2.0 mm (e= 1.37 mm)

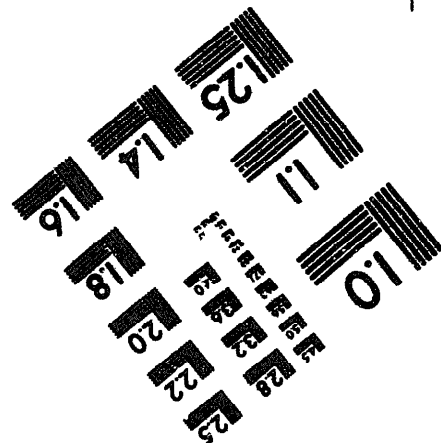
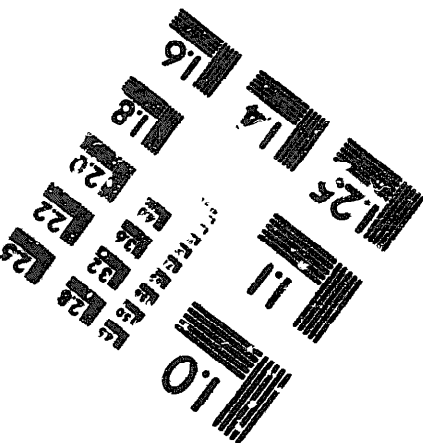
ABCDEFGHIJKLMN OPQRSTUVWXYZ
abcdefghijklmnopqrstuvwxyz
1234567890 \$%&'()*+,-./:;=<=>@*

2.5 mm (e= 1.77 mm)

ABCDEFGHIJKLMN OPQRSTUVWXYZ
abcdefghijklmnopqrstuvwxyz
1234567890 \$%&'()*+,-./:;=<=>@*



200 MM



250 MM